

SUBMERSIBLE TURBINE PUMPS

9" STS SERIES - 1050 GPM



FEATURES

- 100% factory wet tested with test results shipped with each pump
- Hydraulic optimization for exceptional abrasive handling
- Ductile iron motor bracket and discharge for extended pump life
- Premium glass-lined bowls for maximum efficiency and abrasion resistance
- Investment cast 304 stainless steel impellers for superior performance
- Custom configurations available

SPECIFICATIONS

- 11" minimum well I.D.
- 25' minimum submergence above inlet
- 6" NPT discharge
- 650 psi standard maximum working pressure at 1500'

MODEL NO. EXPLANATION

- Example: 600STS25D9C-0166
- 600 = GPM
- STS = Sub Turbine Series
- 25 = Motor HP
- D = Ductile Iron
- 9 = 9" Pump
- C = Impeller Trim Configuration
- 01 = Number of Stages
- 6 = 6" Motor Bracket
- 6 = 6" Discharge

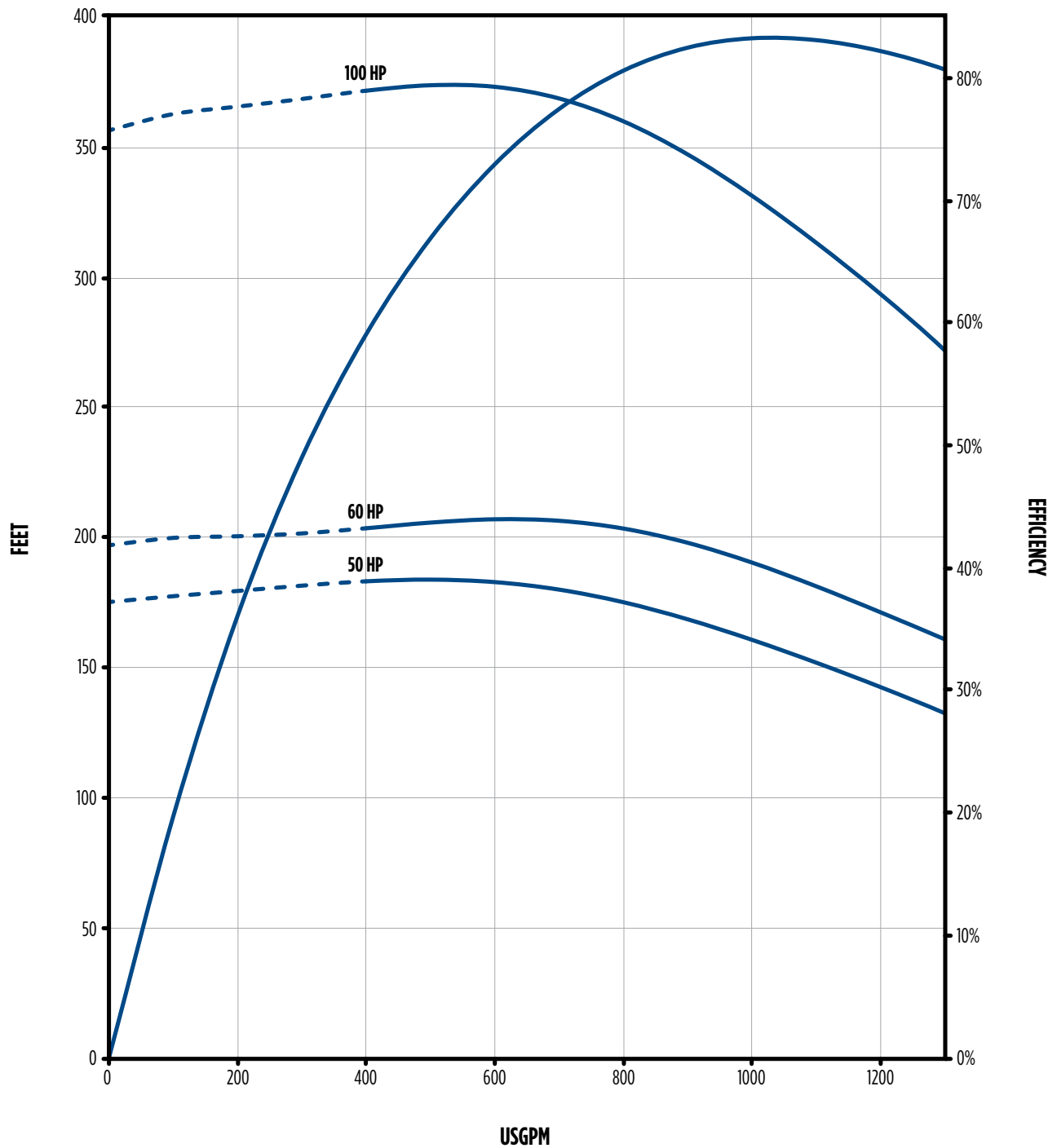


SUBMERSIBLE TURBINE PUMPS

9" STS SERIES - 1050 GPM



PERFORMANCE



— RECOMMENDED OPERATING RANGE

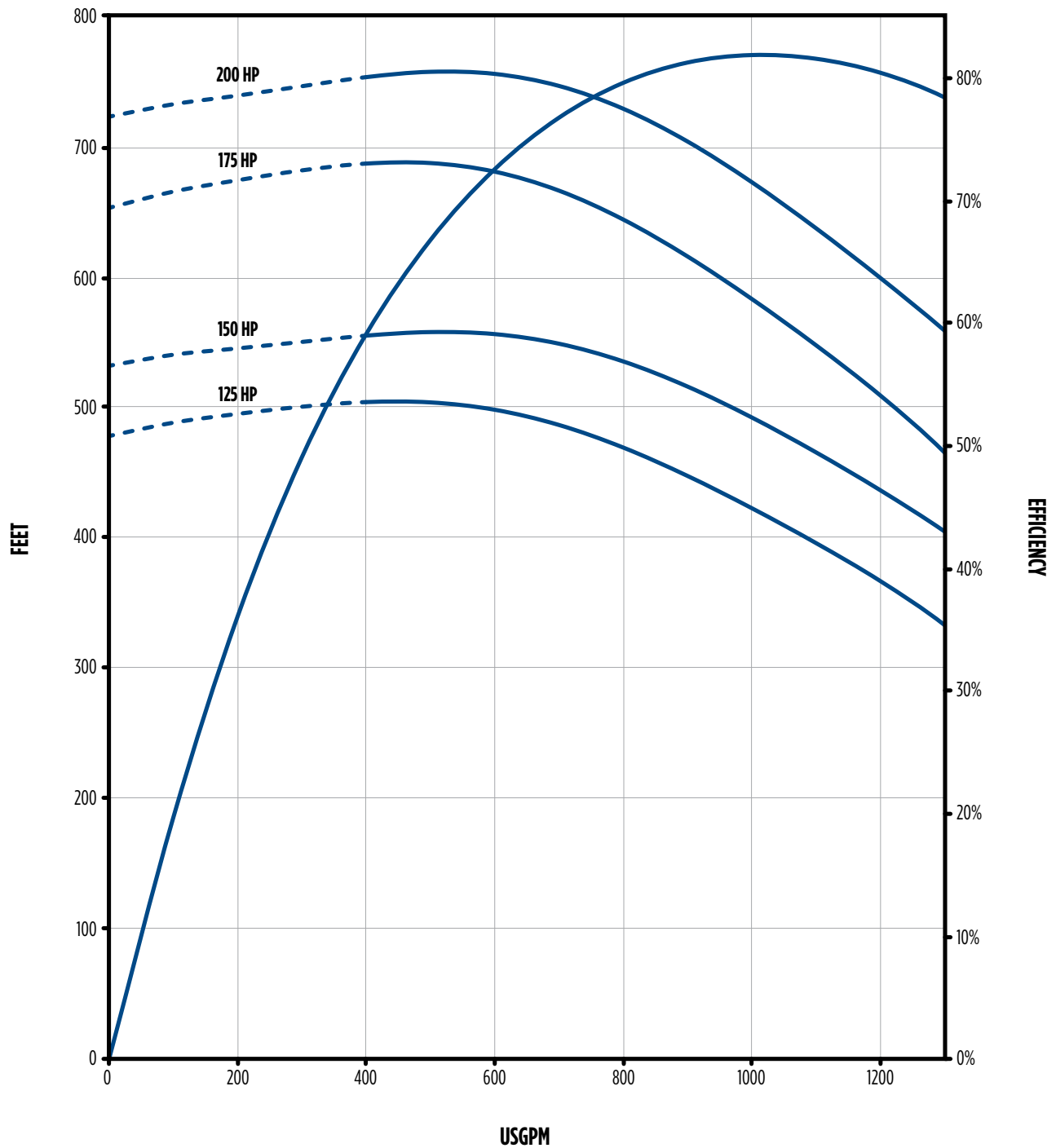
NOTE: Performance based on 68 °F fresh water; 6" motor at 3450 rpm; 8" motor at 3520 rpm

SUBMERSIBLE TURBINE PUMPS

9" STS SERIES - 1050 GPM



PERFORMANCE



— RECOMMENDED OPERATING RANGE

NOTE: Performance based on 68 °F fresh water; 6" motor at 3450 rpm; 8" motor at 3520 rpm

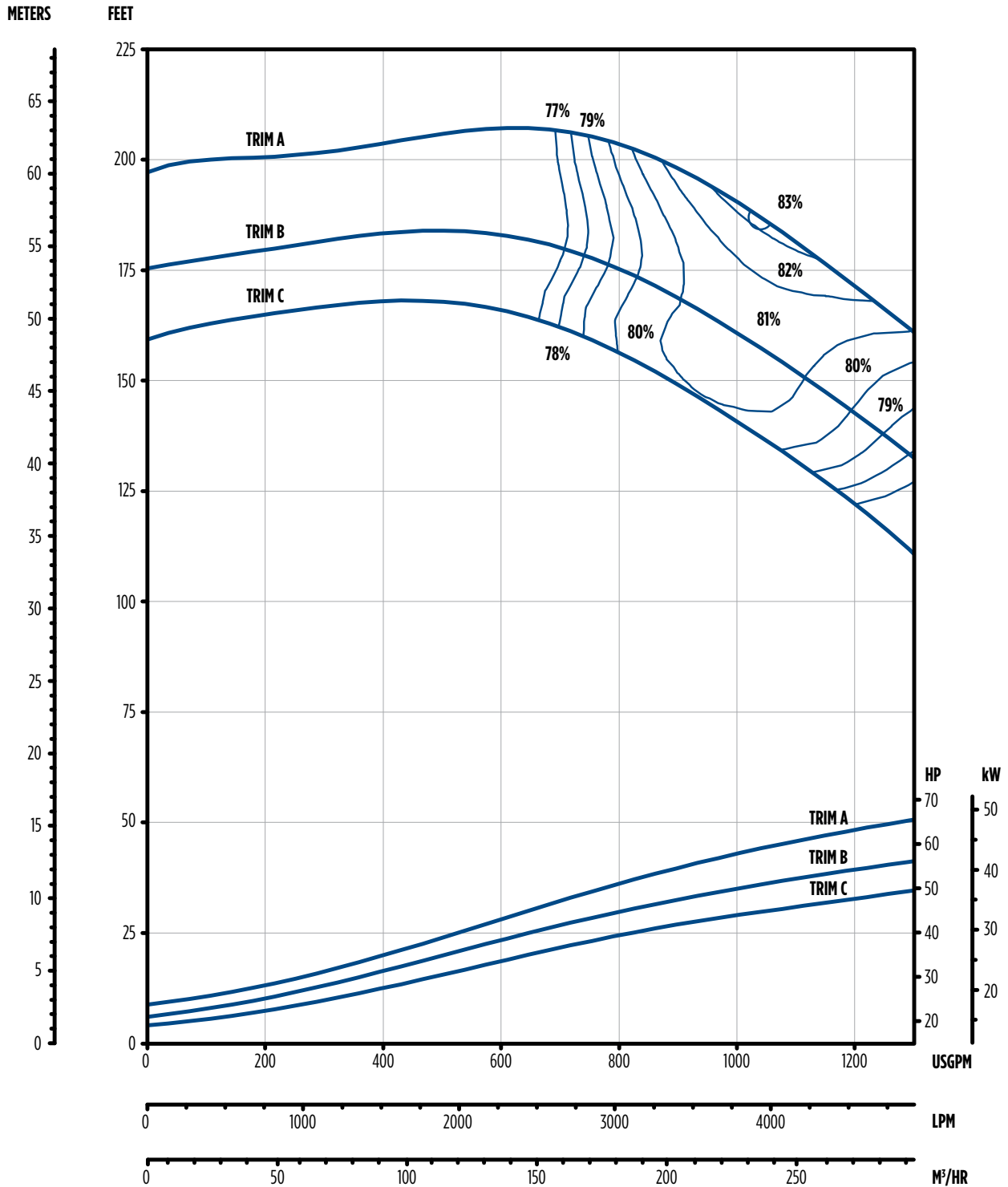
SUBMERSIBLE TURBINE PUMPS

9" STS SERIES - 1050 GPM



DIMENSIONS

SINGLE-STAGE



SUBMERSIBLE TURBINE PUMPS

9" STS SERIES - 1050 GPM



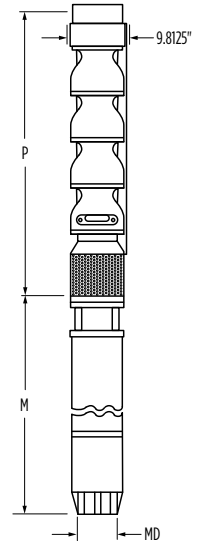
ORDERING INFORMATION

HP	Stages	Trim Size	Motor Size	Discharge (NPT)	Order No.	Model No.	Shipping Wt. (lbs)
50	1	1B	6"	6" NPT	97091050001	1050STS50D9B-0166	182
50	1	1B	8"		97091050101	1050STS50D9B-0186	200
60	1	1A	6"		97091050201	1050STS60D9A-0166	182
60	1	1A	8"		97091050301	1050STS60D9A-0186	200
100	2	1A 1C	8"		97091050002	1050STS100D9X-0286	261
125	3	3C	8"		97091050003	1050STS125D9C-0386	322
150	3	1A 1B 1C	8"		97091050203	1050STS150D9X-0386	322
175	4	1B 3C	8"		97091050004	1050STS175D9X-0486	387
200	4	1A 3B	8"		97091050204	1050STS200D9X-0486	387

DIMENSIONS

HP	Stages	Trim	Motor Size	P	M*	MD*	Motor Wt. lbs	Pump Wt. lbs
				in	in	in		
50	1	1B	6"	23.5	55.3	5.44	300	157
50	1	1B	8"	23.5	39.4	7.7	345	175
60	1	1A	6"	23.5	61.3	5.44	291	157
60	1	1A	8"	23.5	42.1	7.7	344	175
100	2	1A 1C	8"	32.2	54.9	7.7	481	234
125	3	3C	8"	40.8	68.8	7.7	644	293
150	3	1A 1B 1C	8"	40.8	77.8	7.7	840	293
175	4	1B 3C	8"	49.5	85.8	7.7	945	352
200	4	1A 3B	8"	49.5	94.8	7.7	1040	352

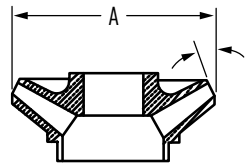
NOTE: *MD diameter = Franklin Electric Motor, M = Maximum Length of Franklin Electric Motor



DIMENSIONS

IMPELLER

Trim	Diameter (in)	C Angle
A	7.047	17°
B	6.732	
C	6.614	



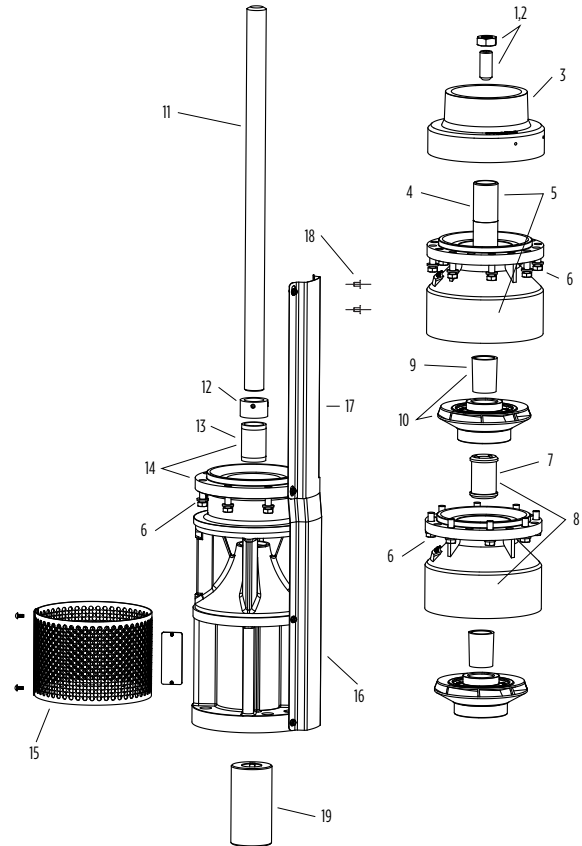
SUBMERSIBLE TURBINE PUMPS

9" STS SERIES - 1050 GPM



REPAIR PARTS

Item No.	Part Description	Part No.
1,2	Uphrust Bolt/Nut Kit	305471553
3	Discharge 6" NPT (no top bearing)	305472548
3	Discharge dual 6/8" NPT (no top bearing)	305472550
4	Top Bearing, Bronze (included in 5)	305472504
5	Top Bowl w/Bronze Top Bearing	305472562
6	Bowl Bolt Kit (12 pieces)	305471549
	Bowl Bolt Kit (1000 pieces)	305471551
7	9" Bowl Bearing, Bronze (included in 8)	305471379
	9" Bowl Bearing, Rubber (included in 8)	305471400
	9" Bowl Bearing, FKM (included in 8)	305471401
8	Bowl and Bearing Assembly, Bronze	305472561
	Bowl and Bearing Assembly, Rubber	305472559
	Bowl and Bearing Assembly, FKM	305472560
	Bowl Only (no bearing installed)	305472592
9	Taper Lock Collet Kit (Included in 10)	305471371
12	Sand Cap w/Set Screws	305471373
13	Motor Bracket Bearing, Bronze (included in 14)	305471379
14	6" Motor Bracket w/Bronze Bearing	305472554
	8" Motor Bracket w/Bronze Bearing	305472552
15	Suction Screen w/Screws for 6" Motor Bracket	305471375
	Suction Screen w/Screws for 8" Motor Bracket	305471376
18	Cable Guard Screw Kit (6 pieces)	305471000
	Cable Guard Clamp	305472593
19	6" Motor Coupling	305471403
	8" Motor Coupling	305471404
-	6" Motor bolt Kit	305352901
	8" Motor Bolt Kit	305352902
	Nameplate w/Drive Screws	305418901
	Owner's Manual	106089101



REPAIR PARTS

IMPELLER

Item No.	Trim	Diameter (in)	C Angle	Kit w/Collets
10	A	7.047	17°	305472542
	B	6.732		305472543
	C	6.417		305472544

NOTE: Shaft and cable guard information located on the following pages

SUBMERSIBLE TURBINE PUMPS

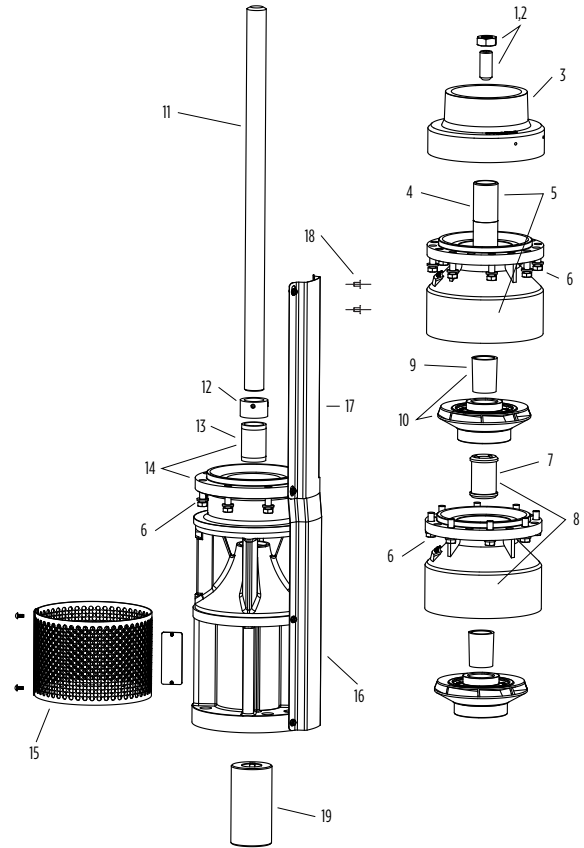
9" STS SERIES - 1050 GPM



REPAIR PARTS

9" Shafts						
Item No.	Stages	Motor Size	Length		Part No.	
			in	mm		
11	1	6	20.64	524.2	305472522	
	2	6	29.13	740	305472523	
	1	8	21.78	553.3	305472505	
	2	8	30.28	769.1	305472506	
	3	8	38.78	984.9	305472507	
	4	8	47.27	1200.7	305472508	
	5	8	55.77	1416.5	305472509	
	6	8	64.26	1632.3	305472510	
	7	8	72.76	1848.1	305472511	
	8	8	81.26	2063.9	305472512	
	Cut-To-Length			48	1219.2	305471367
	Cut-To-Length			72	1828.8	305471368
	Cut-To-Length			96	2438.44	305471369
	Cut-To-Length			120	3048	305471370

9" Cable Guards				
Item No.	Stages	Length		Part No.
		in	mm	
16	Step-Down Cable Guard for 6" Motor			305472589
	Step-Down Cable Guard for 8" Motor			305472590
	10' Cut-To-Length	120.00	3048	305471789
17	1	9.86	250.5	305472563
	2	18.36	466.3	305472564
	3	9.86	250.5	305472565
	4	18.36	466.3	305472566
	5	26.85	682.1	305472567
	6	35.35	897.9	305472568
	7	43.85	1113.7	305472569
	8	52.34	1329.5	305472570



MATERIALS

Part Name	Common Material Name	Material Specification No.
Discharge Bracket	Ductile Iron	ASTM A536 65-45-12
Top Bowl	Ductile Iron	ASTM A536 65-45-12
Intermediate Bowl	Cast Iron	ASTM A49 C1 30B
Bearings, Discharge and Suction	Bronze	ASTM B584 C89835
Impeller	304 Stainless Steel	ASTM A743/A743M CF8
Pump Shaft	416 Stainless Steel	ASTM A582 S41600
Suction Bracket	Ductile Iron	ASTM A536 65-45-12
Bowl Bearing	Rubber	Rubber
Sand Collar	300 Stainless Steel	ASTM A666
Suction Screen	302 Stainless Steel	ASTM A240 S30200
Cable Guard	300 Stainless Steel	ASTM A666
Shaft Coupling	416 Stainless Steel	ASTM A582 S41600
Upthrust Bolt	300 Stainless Steel	ASTM A666
Taper Lock	416 Stainless Steel	ASTM A582 S41600
Bolting	300 Stainless Steel	ASTM A666

Note: Bowl bearing and shaft options available; contact customer service for available options

